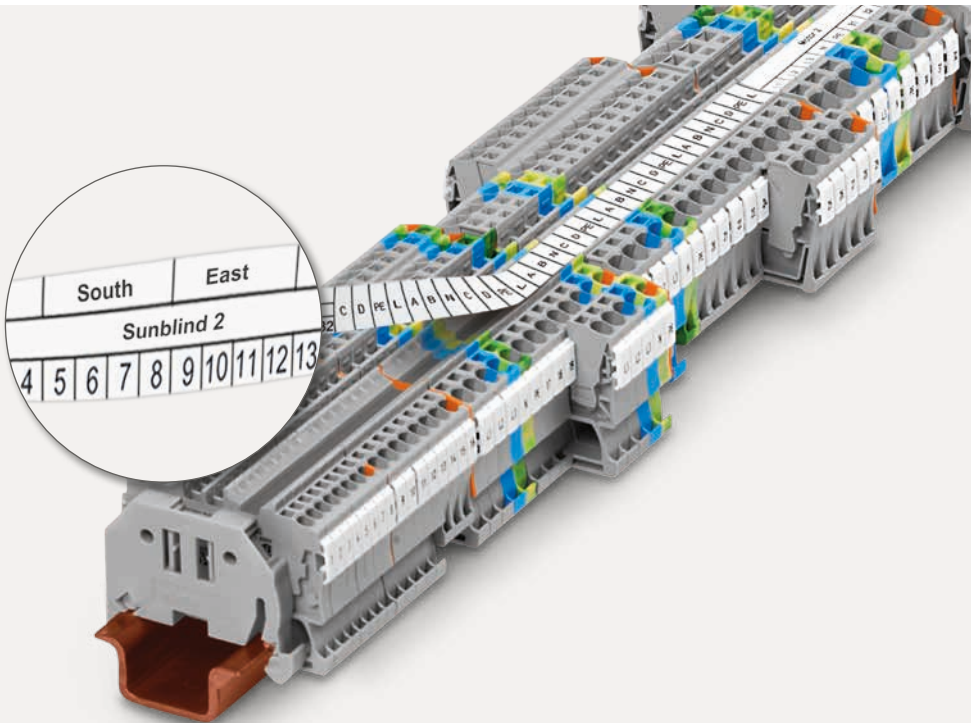




WAGO Marking

Samples and Overview



THE FASTEST MARKING SYSTEM

WAGO's marking materials, printers and software are perfectly synchronized for seamless marking:

- Inline marker slots on DIN-rail-mount terminal blocks for fast marking via markers and marking strips
- Marking strips suitable for all TOPJOB® S Rail-Mounted Terminal Blocks, as well as other select WAGO terminal blocks
- Multi-line marking strips for clear, detailed control cabinet labels
- Easy-to-separate inline markers for multi-level terminal blocks
- Versatile marking options for cables and conductors
- Tailor-made software combines with a **smart**PRINTER for custom marking solutions (e.g., **smart**SCRIPT, **smart**DESIGNER)

Contents

Marking Accessories

Terminal Block Marking	4
Cable and Conductor Marking	10
Device Marking	22

Smart Data Engineering

From Planning to Delivery	40
---------------------------	----

Printer

<i>smart</i> PRINTER	42
----------------------	----



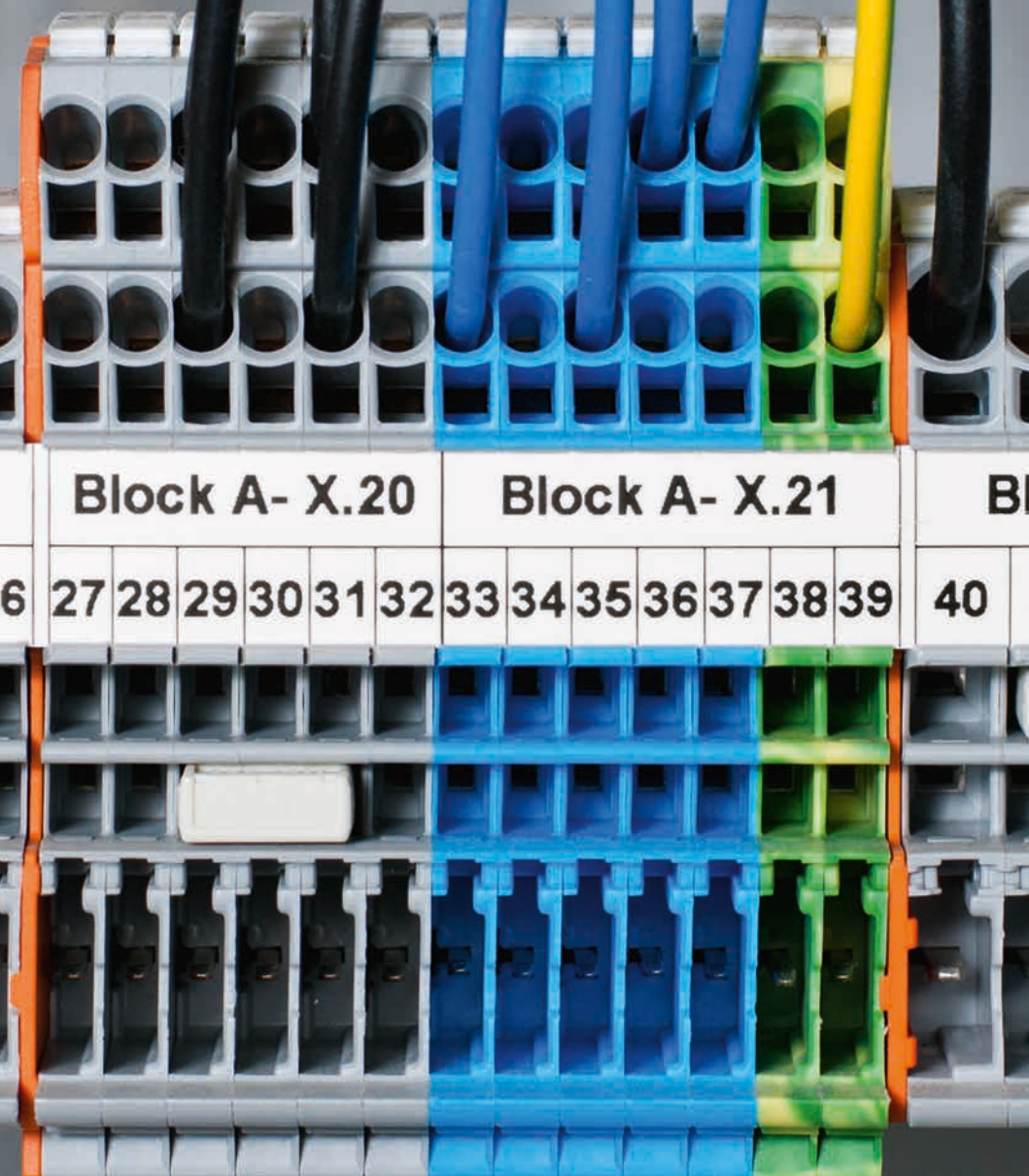
TERMINAL BLOCK MARKING

Clear marking is essential to ensuring error-free wiring for greater safety and reliability.

WAGO offers several options for implementing the right marking solution at the right price. Clearly organize and label all control cabinet components using time-saving marking strips and WMB Inline markers.

WAGO provides multi-line marking for added convenience and greater detail that helps reduce installation errors. Continuous marking strips are supplied on rolls and can even be used on terminal blocks of different sizes.

WAGO-exclusive WMB Inline markers are connected to one another and can be applied to 4 ... 4.2 mm and 5 mm or 5.2 mm wide terminal blocks. They can also be separated for wider terminal blocks. This versatility makes them the perfect fit for any terminal block width.



Block A- X.20

Block A- X.21

Block B

6 27 28 29 30 31 32 33 34 35 36 37 38 39 40

MARKING STRIPS

Muster 2009-110
106 x 10 mm

For *smart*PRINTER

Item No.	Width/Color	Roll
2009-110 (sample)	11 mm, white	50 m
709-177	7.5 mm, translucent	50 m
709-178	7.5 mm, white	50 m
757-901/000-050	10 mm, white	50 m



INLINE MARKERS

On a Roll – WMB Inline and Mini-WSB Inline

Muster 2009-115
75 x 10 mm

Muster 2009-145, 75 x 5 mm

For *smart*PRINTER

Item No.	Terminal Block Width	Roll	Suitable Roller
2009-113 WMB Inline	3.5 mm	2,300 pcs	258-5007
2009-114 WMB Inline	4.0 ... 4.2 mm	2,000 pcs	258-5007
2009-115 (WMB Inline, top sample)	5.0 ... 5.2 mm	1,500 pcs	258-5007
2009-145 (Mini-WSB Inline, bottom sample)	5.0 ... 5.2 mm	1,700 pcs	258-5008
2009-515 WMB Inline for Phoenix Contact terminal blocks	5.0 ... 5.2 mm	900 pcs	258-5009
2009-615 WMB Inline for Weid- müller terminal blocks	5.0 ... 5.2 mm	1,200 pcs	258-5010



CABLE AND CONDUCTOR MARKING

WAGO offers versatile marking options for cables and wires – even across the greatest variety of marking surface sizes and various diameters!

The choice is yours: Whether you prefer marking sleeves, self-laminating labels, conductor markers for thread-on mounting or shrink tubes, WAGO has the right solution for marking any application.

WAGO 211 Series
Wire and Cable Marking

=X:K10.01

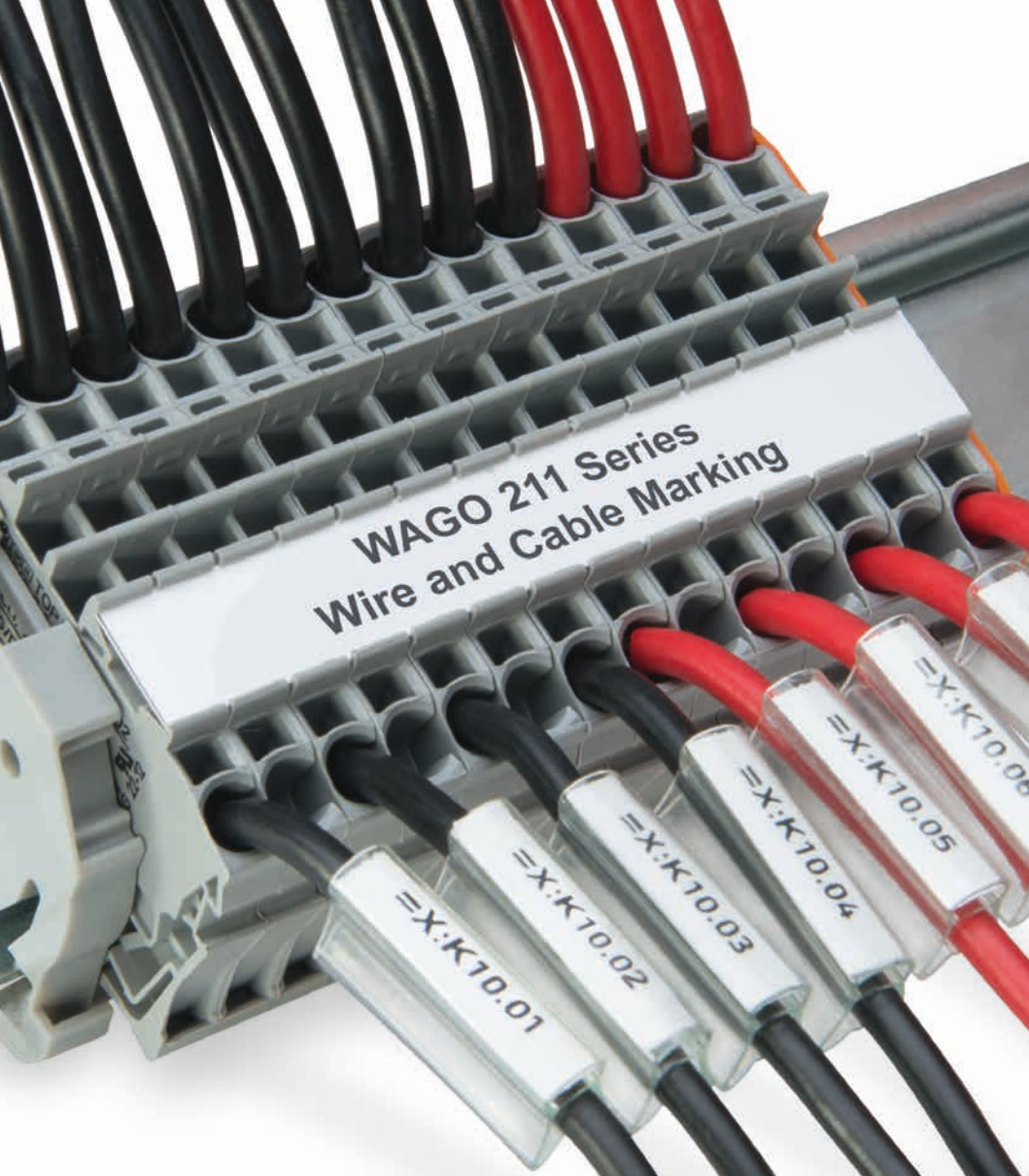
=X:K10.02

=X:K10.03

=X:K10.04

=X:K10.05

=X:K10.06



MARKING SLEEVES

211-829
25 x 10 mm

For *smart*PRINTER

Item No.	Length	Wire Diameter	Suitable Markers
211-812	12 mm	1.4 ... 5.0 mm	211-811, 12 x 4 mm
211-813	12 mm	5.0 ... 11.0 mm	211-811, 12 x 4 mm
211-823	23 mm	1.4 ... 5.0 mm	211-821, 23 x 4 mm
211-824	23 mm	5.0 ... 11.0 mm	211-821, 23 x 4 mm
211-829 (sample)	23 mm	Secure using cable ties	211-821, 23 x 4 mm (sample)

Gbdd. X1-3.Etage
B110BX

Gbdd. X1-2.Etage
B110A

Gbdd. X1-1.Etage
B110A

Gbdd. X1-2.Etage
B110A



CABLE TIE MARKERS

211-835
60 x 40 mm

211-836
117.5 x 45 mm

For *smart*PRINTER

Item No.	Writable Surface	Roll
211-835 (top sample)	25 x 10 mm, 1 line, white	500 pcs
211-836 (bottom sample)	100 x 15 mm, 2 lines, white	800 pcs
211-836/000-002	100 x 15 mm, 2 lines, yellow	800 pcs
807-090/101-100	Suitable cable tie	

A.0001

A.0002

A.0003

A.0004

A.0005



SELF-LAMINATING LABELS



Note:
Change the ink ribbon on 258-5014

For *smart*PRINTER

Item No.	Writable Surface	Cable Diameter
211-855 (sample)	9 x 18 mm, 2 lines	max. 9 mm
211-856	15 x 22 mm, 2 lines	max. 12 mm
211-857	18 x 44 mm, 1 line	22 mm (max.)



X.28 -B2

X.29 -B2

X.30 -B2

X.31 -B2

X.32 -B2

X.33 -B2

X.34 -B2

X.35 -B2

2

A1

A2

A1

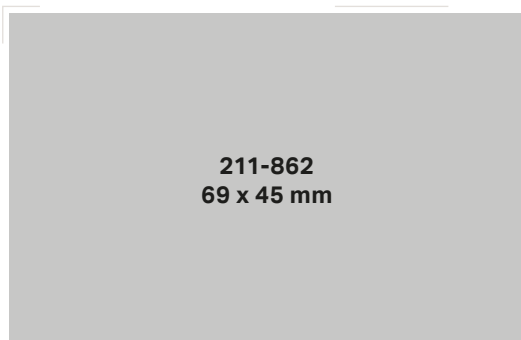
A2

A1

A2

A1


WIRE MARKERS FOR THREAD-ON MOUNTING



211-862
69 x 45 mm

For *smart*PRINTER

Item No.	Writable Surface	Wire Marking
211-861	5 x 10.5 mm, 3 lines	0.75 ... 1.5 mm ²
211-862 (sample)	7 x 10.5 mm, 3 lines	2.5 ... 6.0 mm ²
211-863	10 x 17 mm, 2 lines	6.0 ... 16 mm ²



WAGO 211 Series
Wire and Cable Marking

This image shows a close-up of a WAGO 211 Series terminal block. The top half of the block is empty, showing a grid of 12 columns and 2 rows of terminals. The bottom half is populated with six black cables. Each cable has a white or yellow shrink tube marking. The markings are: A.7 (white), A.8 (white), A.9 (white), A.10 (yellow), A.11 (yellow), and A.12 (yellow). The terminal block is grey with a white label area.



Shrink Tubes

This image shows a close-up of a terminal block with six black cables inserted. Each cable has a white or yellow shrink tube marking. The markings are: E1.1 (white), E1.2 (white), E1.3 (white), E1.4 (yellow), E1.5 (yellow), and E1.6 (yellow). The terminal block is grey with a white label area.

A.7

A.8

A.9

A.10

A.11

A.12

E1.1

E1.2

E1.3

E1.4

E1.5

E1.6

SHRINK TUBES

211-503/000-002
60 x 10 mm

For *smart*PRINTER, halogen-free, 2:1 shrink ratio


Item No.	Unshrunk Ø/Color	Cross Section	Roll
211-500	2.4 mm, white	0.25 ... 0.75 mm ²	20 m
211-500/000-002	2.4 mm, yellow	0.25 ... 0.75 mm ²	20 m
211-501	3.2 mm, white	0.75 ... 1.00 mm ²	20 m
211-501/000-002	3.2 mm, yellow	0.75 ... 1.00 mm ²	20 m
211-502	4.8 mm, white	1.00 ... 2.50 mm ²	20 m
211-502/000-002	4.8 mm, yellow	1.00 ... 2.50 mm ²	20 m
211-503	6.4 mm, white	4.00 ... 6.00 mm ²	20 m
211-503/000-002	6.4 mm, yellow	4.00 ... 6.00 mm ²	20 m
211-504	9.5 mm, white	10.0 ... 16.0 mm ²	15 m
211-504/000-002	9.5 mm, yellow	10.0 ... 16.0 mm ²	15 m
211-505	12.7 mm, white	25.0 ... 35.0 mm ²	15 m
211-505/000-002	12.7 mm, yellow	25.0 ... 35.0 mm ²	15 m
211-506	19 mm, white	35.0 ... 50.0 mm ²	15 m
211-506/000-002	19 mm, yellow	35.0 ... 50.0 mm ²	15 m

- BMK2	WAGO Kontakttec	Hansa	32423 Min	Product
- BMK4	WAGO	Label 44 x 99, color white	February 2016	Date
- BMK6	SH & Co. KG	210-803		ID
- BMK8	iden			
ct	Date			
Date				

DEVICE MARKING

WAGO's broad selection of label types (e.g., printable fabric), push-button markers and type plates optimizes marking for devices and control cabinets.

Most labels can be conveniently printed directly from a roll. Additionally, various colors, sizes and frames are available for push-button markers or plastic covers. Take advantage of WAGO's free ProServe® Software to easily customize marking!



Block
A2-15 M

Block
A2-16 M

Block
A2-17 M

Block
A2-18 M

A2-19 M

A2-20 M

A2-21 M

A2-22 M

MARKING STRIPS

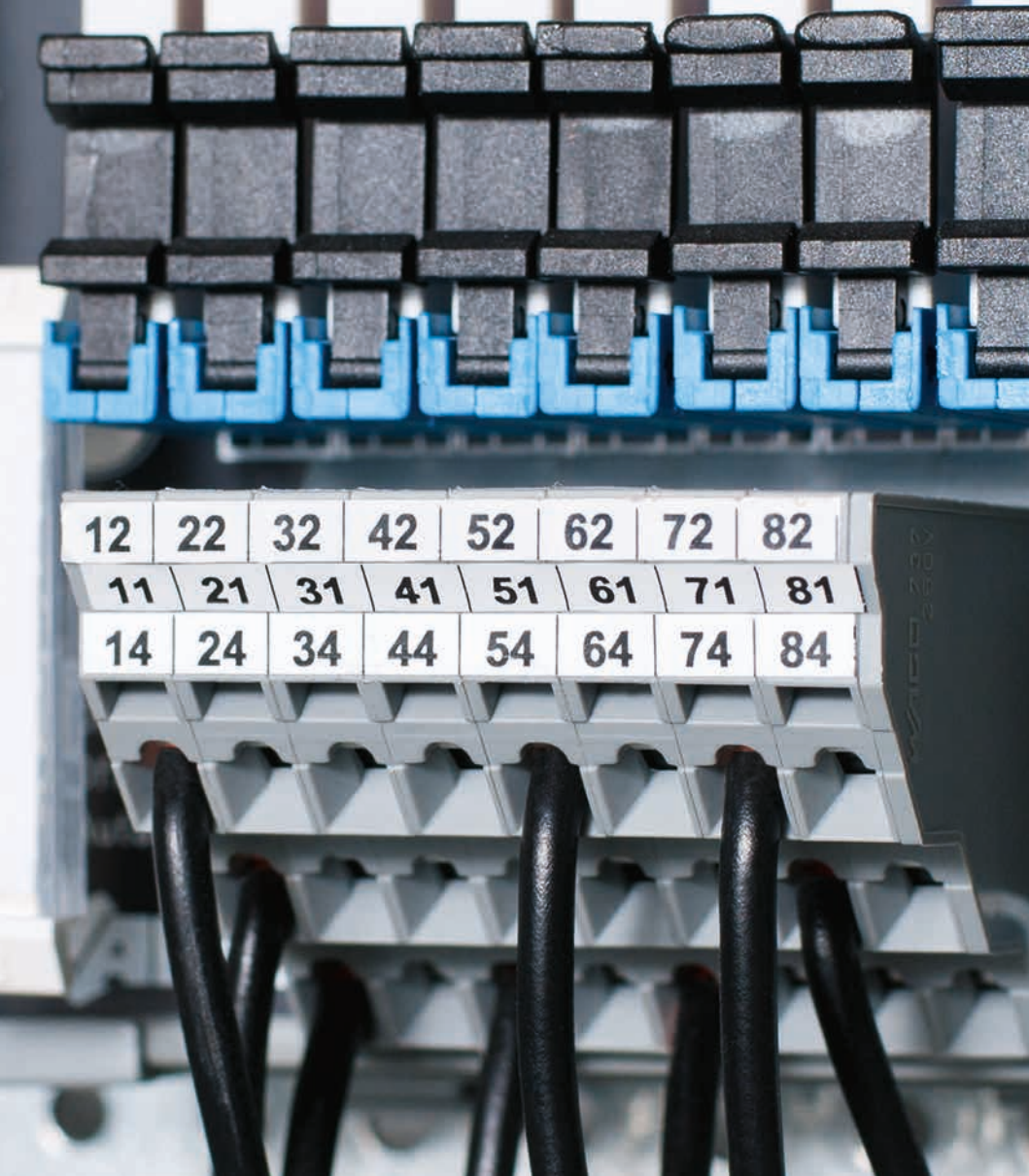
Self-Adhesive

210-702
100 x 10 mm

210-873
100 x 20 mm

For *smart*PRINTER


Item No.	Width/Color	Roll
210-702 (top sample)	15 mm, white	50 m
210-870	10 mm, white	20 m
210-871	10 mm, silver	20 m
210-872	20 mm, white	20 m
210-873 (bottom sample)	20 mm, silver	20 m
210-874	30 mm, white	20 m
210-875	30 mm, silver	20 m
210-876	46 mm, white	20 m
210-876/000-002	46 mm, yellow	20 m
210-877	46 mm, silver	20 m



12	22	32	42	52	62	72	82
11	21	31	41	51	61	71	81
14	24	34	44	54	64	74	84

CONTINUOUS LABELS

Self-Adhesive



210-832
87 x 46 mm

For *smart*PRINTER

Item No.	Width/Number of Strips	Roll
210-831	2.3 mm/9	25 m
210-832 (sample)	3.0 mm/9	25 m
210-833	6.0 mm/5	25 m
210-834	5.0 mm/5	25 m

NC | NC | NO | DC 24V
21 31 43 A1+

NO | NC | NC | NO
13 21 31 43

3RH
22E
X.13

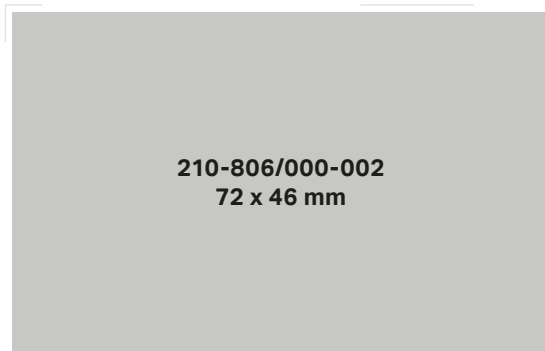
22E
X.14

G/970217 3RH1122-2SB40
14 22 32 44 A2-
NO | NC | NC | NO

G/970217 3RH1122-2SB40
14 22 32
NO | NC | NC | NO

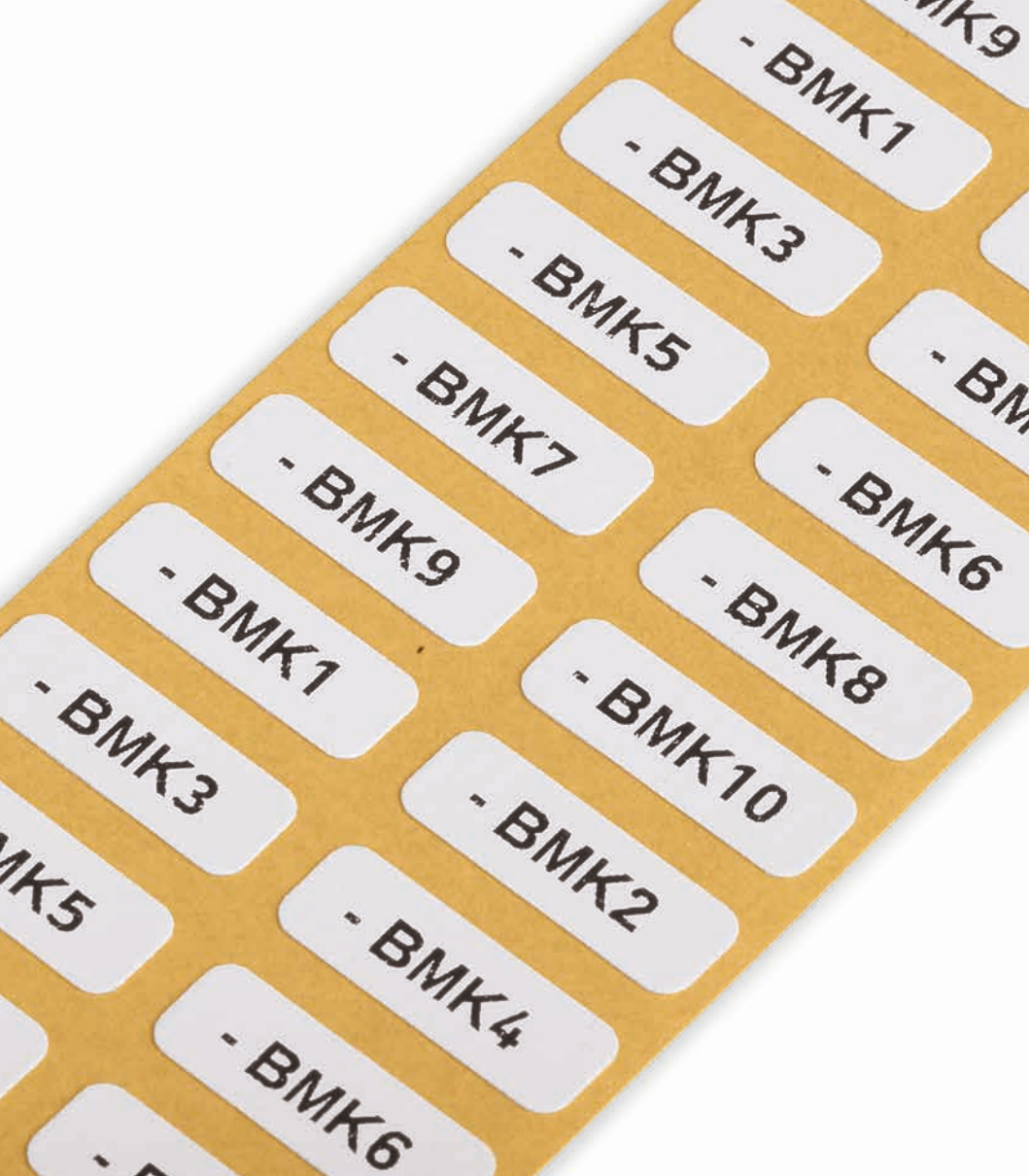
LABELS

Self-Adhesive



For *smart*PRINTER

Item No.	Size/Color	Roll
210-805	6 x 15 mm, white	3,000 pcs
210-805/000-002	6 x 15 mm, yellow	3,000 pcs
210-806	9 x 15 mm, white	3,000 pcs
210-806/000-002 (above)	9 x 15 mm, yellow	3,000 pcs
210-807	8 x 20 mm, white	3,000 pcs
210-807/000-002	8 x 20 mm, yellow	3,000 pcs



- BMK1

- BMK3

- BMK5

- BMK7

- BMK9

- BMK1

- BMK6

- BMK8

- BMK10

- BMK3

- BMK2

- BMK4

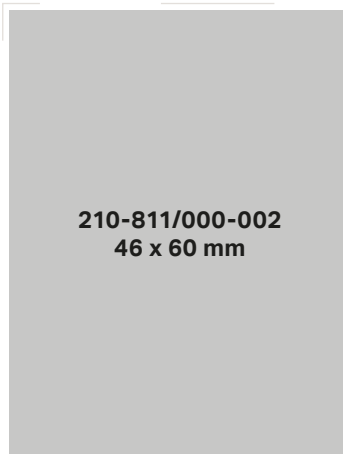
- BMK6

- BMK5

- BMK

FABRIC LABELS

Self-Adhesive



For *smart*PRINTER

Item No.	Size/Color	Roll
210-811	7 x 20 mm, 1 line, white	3,000 pcs
210-811/000-002 (sample)	7 x 20 mm, 1 lines, yellow	3,000 pcs

X-15

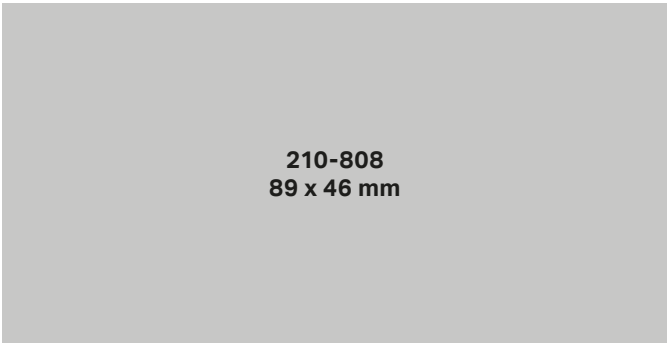
110

Etage C3 3. Etage C4

S-12

LABELS

Self-Adhesive



210-808
89 x 46 mm

For *smart*PRINTER

Item No.	Size/Color	Roll
210-808 (sample)	9.5 x 25 mm, 3 line, white	1,500 pcs
249-119	Height-adjustable group marker carrier	



S.11 - 98 X2

WAGO

Hansastr. 27

D-32423 Minden

GL

WAGO

52 53

WAGO

54 55

WAGO

750-501

750-501

TEK
End

60
TEK7506
TA 11 T

tribent

AV

9

9

LABELS

Self-Adhesive



For *smart*PRINTER

Item No.	Size	Roll/Color
210-810 (sample)	5 x 35 mm	1,500 pcs/white
249-120	Height-adjustable group marker carrier	

WAGO Kontakttechnik GmbH & Co. KG
Hansastr. 27
32423 Minden



Product

Label 44 x 99, color silver

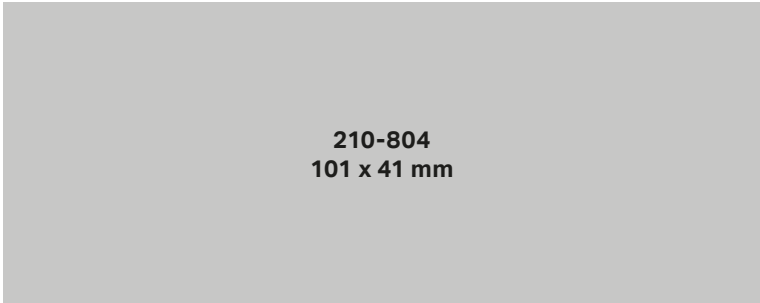
Date

February 2016

ID

210-804

TYPE PLATES



210-804
101 x 41 mm

For *smart*PRINTER

Item No.	Size/Color	Roll
210-801	70 x 33 mm, white	500 pcs
210-802	70 x 33 mm, silver	500 pcs
210-803	99 x 44 mm, white	500 pcs
210-804 (sample)	99 x 44 mm, silver	500 pcs
210-812	50 x 25 mm, silver	500 pcs



Required Accessories

Item No.	Pack. Unit
210-851 Cover, transparent	100 pcs
210-857 Cover, transparent	100 pcs
210-859 Cover, transparent	100 pcs
210-861 Cover, transparent	100 pcs
210-863 Cover, transparent	100 pcs
210-853 Push-button frame, black	100 pcs
210-853 Push-button frame, black	100 pcs

—
—
—

PUSH-BUTTON MARKERS

210-854
66 x 40 mm

For smartPRINTER

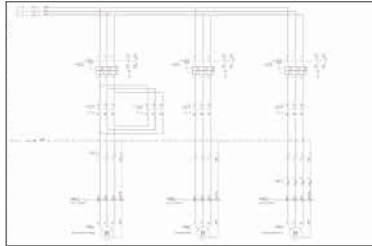
Item No. (Push-Button Marker)	Size	Roll	Color/Other
210-850 (for Eaton)	26.5 x 18.0 mm	1,000 pcs	silver/detachable adhesive
210-856 (for Siemens)	27.5 x 17.5 mm	1,000 pcs	silver/detachable adhesive
210-858 (for Siemens)	22.0 x 22.0 mm	1,000 pcs	silver/permanent adhesive
210-860 (for Siemens)	27.0 x 27.0 mm	1,000 pcs	silver/permanent adhesive
210-862 (for Siemens)	27.0 x 12.5 mm	1,000 pcs	silver/permanent adhesive
210-852	27.0 x 19.0 mm	350 pcs	silver/permanent adhesive
210-855	27.0 x 18.0 mm	350 pcs	silver/permanent adhesive
210-854 (sample)	28.0 x 28.0 mm	500 pcs	silver/permanent adhesive
210-847	22 x 22 mm	300 pcs	silver/permanent adhesive
210-848	27 x 27 mm	250 pcs	silver/permanent adhesive

SMART DATA ENGINEERING

Supports Workflow from
Control Cabinet Planning to Installation

Electrical Engineering

Directly import data from
the CAE circuit diagram
into the **smartDESIGNER**
engineering software



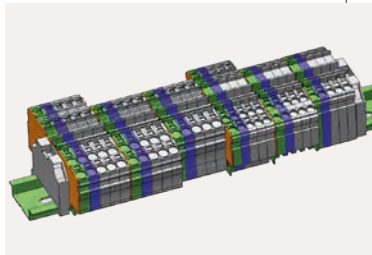
Technical and Commercial Item Data

Classified by ETIM and
eCl@ss – also in Advanced
Format



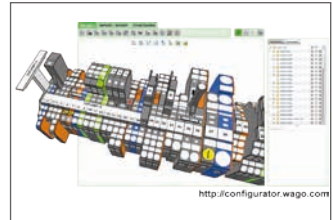
Mechanical Engineering

CAD export into all standard
CAD formats and in different
granularities



smartDESIGNER

- Free online configuration and ordering software for all electrical interconnect and automation components
- No installation required
- Available worldwide – 24 hours a day
- Item data is always updated
- Auto-audit feature checks product compatibility via programed database
- Design in full 3D



smartSCRIPT

- XML-based software for all WAGO marking materials
- Data import from CAE systems
- Font size check
- Material selection wizard

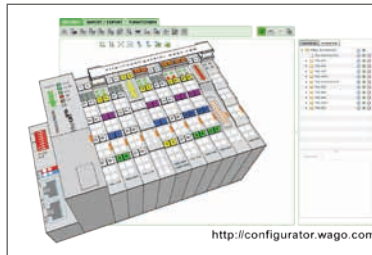


SMART DATA ENGINEERING

Fast and Easy Control Cabinet Marking

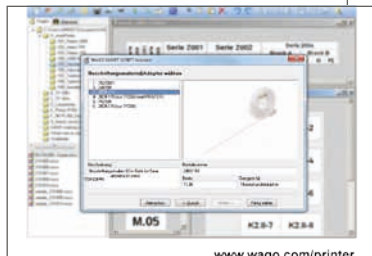
smartDESIGNER

After designing, print labeling materials directly from the project via **smart**PRINTER



smartSCRIPT

- Import from CAE systems or create customized marking
- Print directly on **smart**PRINTER





www.wago.com/smartprinter

smartPRINTER

Thermal transfer printer quickly and easily labels the entire control cabinet:

- WAGO marking strips and markers
- Cable and conductor marking
- Type plates
- Push-button markers
- Labels

ACCESSORIES FOR *smart*PRINTER



Roller for marking strips,
258-5006



Roller for WMB Inline,
258-5007



Roller for Miniature WSB
Inline, 258-5008



Roller for WMB Inline for
Phoenix Contact terminal
blocks, 258-5009



Roller for WMB Inline
for Weidmüller terminal
blocks, 258-5010



Ink ribbon, standard,
258-5005



Ink ribbon for self-laminating
labels, 258-5014



*smart*PRINTER carrying
case, 258-5015

THERMAL TRANSFER PRINTER

Everything you need to know about this printer, its time-saving accessories and marking materials is available at:

www.wago.com/smartprinter



smartPRINTER
258-5000

WAGO Kontakttechnik GmbH & Co. KG

Postfach 2880 · 32385 Minden
Hansastraße 27 · 32423 Minden
info@wago.com
www.wago.com

Headquarters	+49 571/ 887 - 0
Sales	+49 571/ 887 - 222
Order Service	+49 571/ 887 - 44 333
Fax	+49 571/ 887 - 844 169

WAGO is a registered trademark of WAGO Verwaltungsgesellschaft mbH.

"Copyright – WAGO Kontakttechnik GmbH & Co. KG – all rights reserved. The content and structure of the WAGO websites, catalogs, videos, and other WAGO media are subject to copyright. Distribution or modification to the contents of these pages and videos is prohibited. Furthermore, the content may neither be copied nor made available to third parties for commercial purposes. Also subject to copyright are the images and videos that were made available to WAGO Kontakttechnik GmbH & Co. KG by third parties."