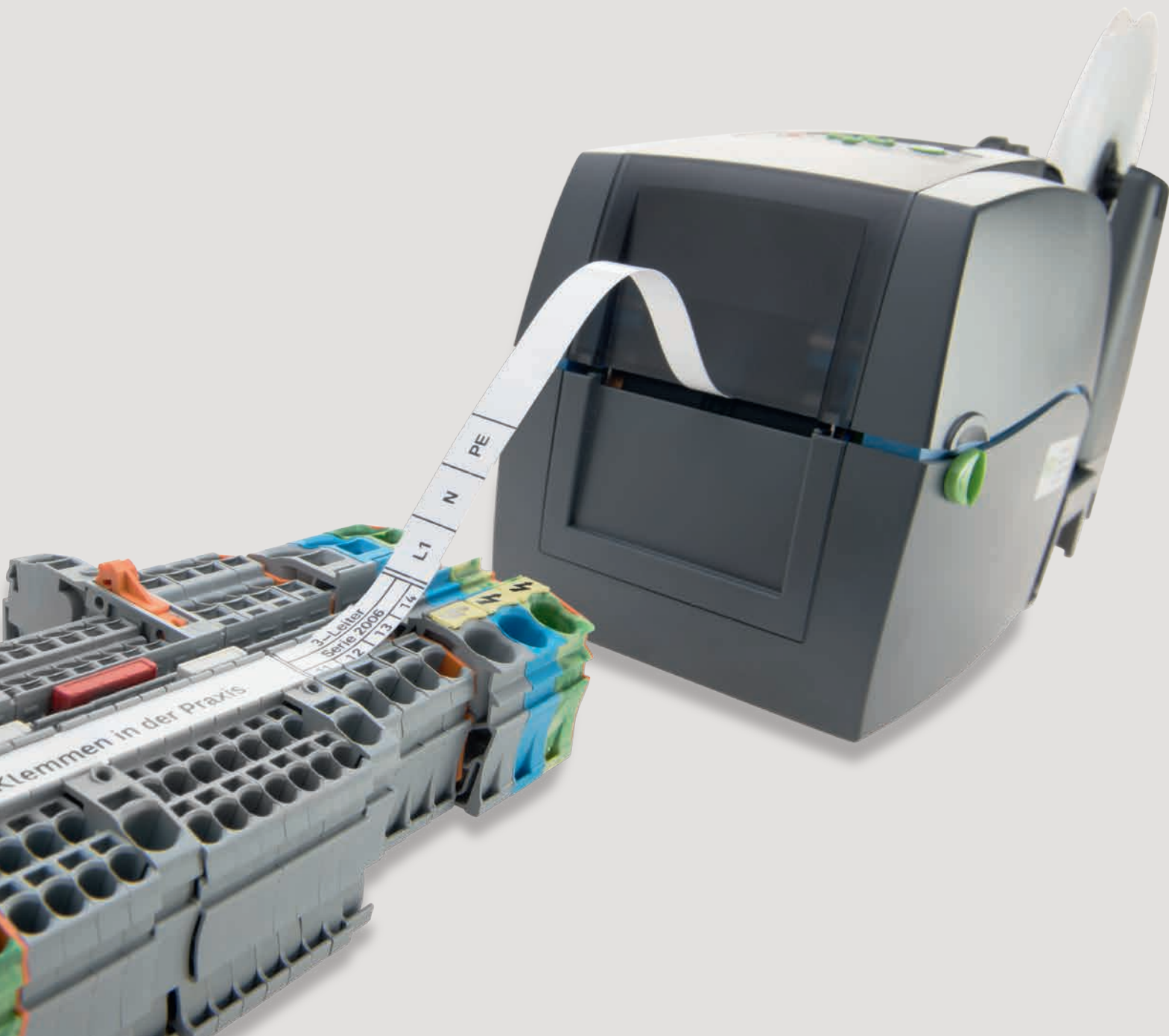
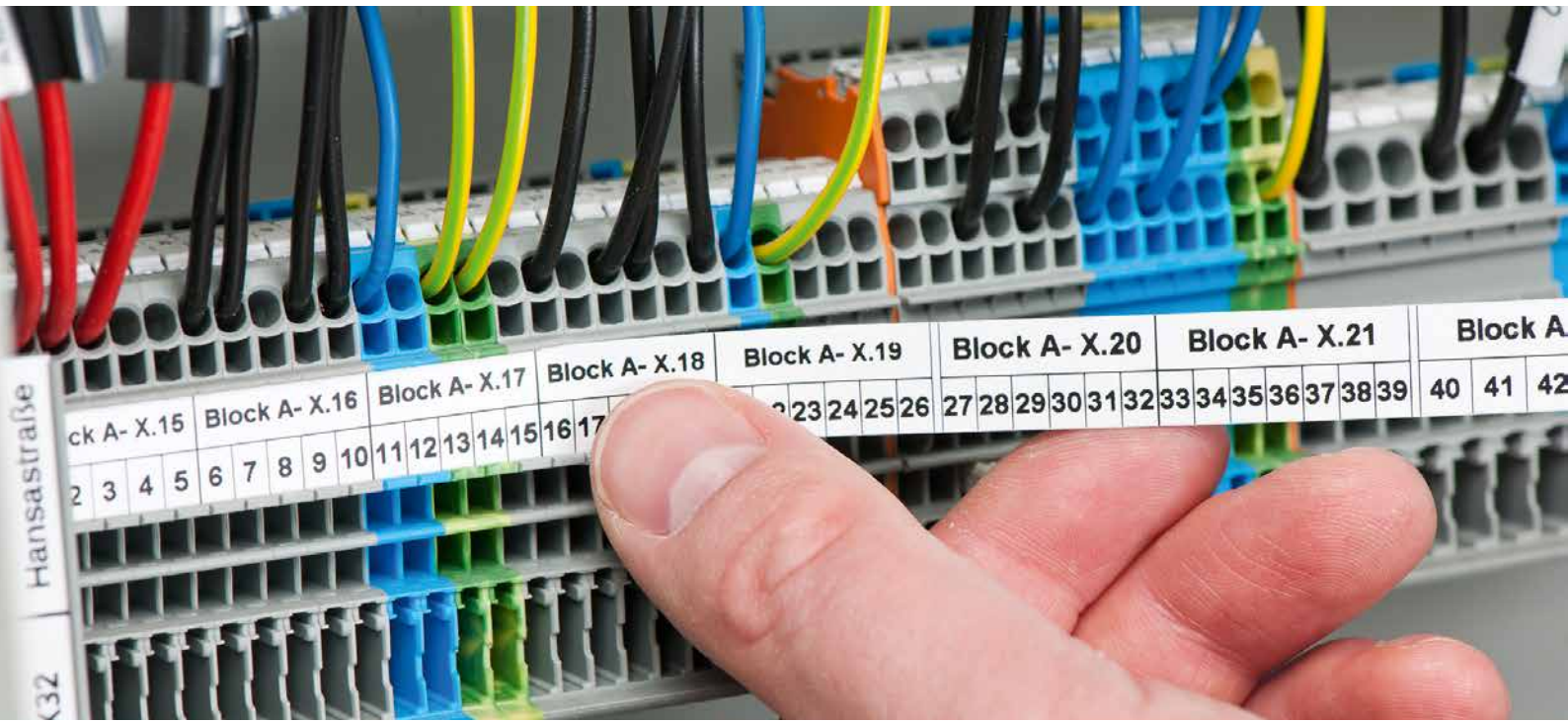




# KEEP YOUR COSTS IN LINE

The Fastest Marking System





# CLEARLY MARK CONTROL CABINETS



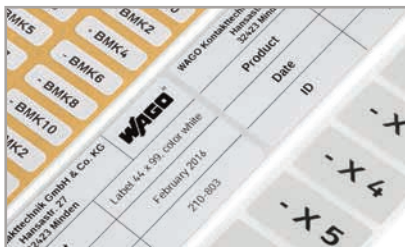
## Terminal Block Marking

- Multi-line marking strips for clear, detailed control cabinet labels
- WMB Inline markers on a reel are suitable for various terminal block sizes – just one marker size for all standard applications
- Fast mounting thanks to TOPJOB® S Terminal Blocks of the same profile



## Cable and Conductor Marking

- Different versions available: marking sleeves, self-laminating labels, conductor markers for thread-on mounting or shrink tubes
- Large variety of marking surface sizes



## Device Marking

- Broad selection of label types (e.g., printable fabric), push-button markers and type plates optimizes marking for devices and control cabinets
- Marking materials are available in a variety of colors and sizes

# SAVE MONEY WITH *smart*PRINTER

## A Universal and Fast Thermal Transfer Printer

### Easy to Use

Generate all marking data directly via *smart*SCRIPT marking software

### Cost-Effective Marking

- Lower purchase costs
- Reduce marking time

### Long-Lasting, Wipe- and Scratch-Proof Marking



### Universal

- For any control cabinet marking application
- Mark all WAGO terminal blocks and label conductors/cables and devices

### Easy Installation

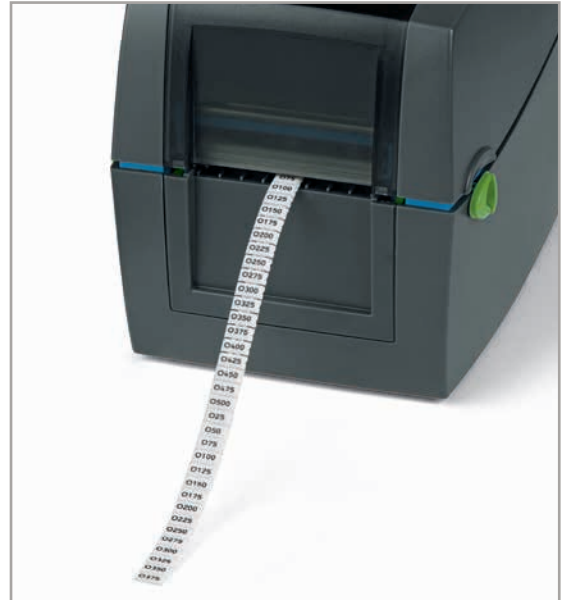
Installation package and marking software are available at:  
[www.wago.de/smartprinter](http://www.wago.de/smartprinter)

# TERMINAL BLOCK MARKING

Marking Strips










WMB Inline Markers on a Roll



Item No.	Width/Color	Pack. Unit
2009-110	11 mm, white	1 roll (50 m)
709-177	7.5 mm, translucent	1 roll (50 m)
709-178	7.5 mm, white	1 roll (50 m)
757-901/ 000-050	10 mm, white	1 roll (50 m)

Item No.	Description	Pack. Unit
2009-113	WMB Inline, white, 3.5 mm pitch, stretchable	1 roll (2,300 markers)
2009-114	WMB Inline, white, 4 mm pitch, 4 ... 4.2 mm stretchable	1 roll (2,000 markers)
2009-115	WMB Inline, white, 5 mm pitch, 5 ... 5.2 mm stretchable	1 roll (1,500 markers)
2009-145	Mini-WSB Inline, white, plain, 5 ... 5.2 mm stretchable	1 roll (1,700 markers)
2009-515	WMB Inline for Phoenix Contact terminal blocks, white, plain, 5 ... 5.2 mm stretchable	1 roll (900 markers)  replaces UC-TM5 and ZB5 markers
2009-615	WMB Inline for Weidmüller terminal blocks, white, plain, 5 ... 5.2 mm stretchable	1 roll (1,200 markers)  replaces WS 10/5 marker

## Inline Markers and Rollers

	Description	Compat- ible with Series	Color (Marker)	Item No. (Marker)	Color (Roller)	Item No. (Roller)
	<b>WMB Inline,</b> plain, 3.5 mm stretchable	<b>2000, 2020</b>	○ white ● yellow ● red ● blue ● gray ● orange ● light green ● green ● violet	<b>2009-113</b> 2009-113/000-002 2009-113/000-005 2009-113/000-006 2009-113/000-007 2009-113/000-012 2009-113/000-017 2009-113/000-023 2009-113/000-024	● green	<b>258-5007</b>
	<b>WMB Inline,</b> plain, 4 ... 4.2 mm stretchable	<b>2001</b>	○ white ● yellow ● red ● blue ● gray ● orange ● light green ● green ● violet	<b>2009-114</b> 2009-114/000-002 2009-114/000-005 2009-114/000-006 2009-114/000-007 2009-114/000-012 2009-114/000-017 2009-114/000-023 2009-114/000-024	● green	<b>258-5007</b>
	<b>WMB Inline,</b> plain, 5 ... 5.2 mm stretchable	<b>2002 ... 2016, 2022</b>	○ white ● yellow ● red ● blue ● gray ● orange ● light green ● green ● violet	<b>2009-115</b> 2009-115/000-002 2009-115/000-005 2009-115/000-006 2009-115/000-007 2009-115/000-012 2009-115/000-017 2009-115/000-023 2009-115/000-024	● green	<b>258-5007</b>
	<b>Mini-WSB Inline,</b> plain, 5 ... 5.2 mm stretchable	<b>769 , 750</b>	○ white ● yellow ● red ● blue ● gray ● orange ● light green ● green ● violet	<b>2009-145</b> 2009-145/000-002 2009-145/000-005 2009-145/000-006 2009-145/000-007 2009-145/000-012 2009-145/000-017 2009-145/000-023 2009-145/000-024	● blue	<b>258-5008</b>
	<b>WMB Inline for Phoenix Contact terminal blocks,</b> plain, 5.2 mm stretchable, replaces UC-TM5 and ZB5		○ white	<b>2009-515</b>	○ white	<b>258-5009</b>
	<b>WMB Inline for Weidmüller terminal blocks,</b> plain, 5.2 mm stretchable, replaces WS 10/5		○ white	<b>2009-615</b>	● red	<b>258-5010</b>
	<b>Marking strips, cable and conductor markers, device labels</b>		–	<b>see page 4 and page 8 ff.</b>	● black	<b>258-5006</b>

# SELECTION MATRIX

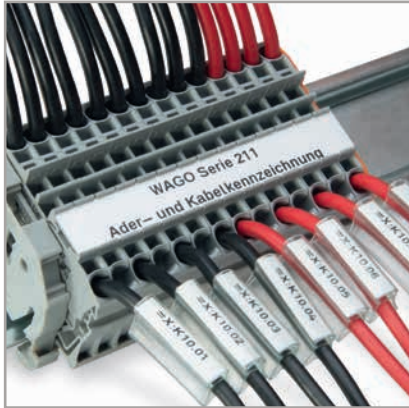
## Marking Accessories and Appropriate Product Series

		Marking strips		WMB Inline markers on a roll			WMB markers, cards			Mini-WSB markers, roll and card		Self-adhesive marking strips	Direct marking on product
		Width (mm)		3.5	4 ... 4.2	5 ... 5.2	3.5	4 ... 4.2	5 ... 5.2	5 (Roll)	5 (Card)	9	
<b>TOPJOB® S Rail-Mounted Terminal Blocks</b>													
2000 Series	3.5		■	■			■						
2001 Series	4.2		■	□	■		□	■					
2002 Series	5.2		■		■			■		□	□		
2003 Series	5.2		■					■		□	□		
2004 Series	6.2		■							□	□		
2005 Series	6.2		■							□	□		
2006 Series	7.5		■							□	□		
2007 Series	8		■							□	□		
2010 Series	10		■							□	□		
2016 Series	12		■							□	□		
<b>"Classic" Rail-Mounted Terminal Blocks</b>													
270 Series	5	□				■		■		□	□		
279 Series	4				■		●	■					
280 Series	5				□	■		□	■				
281 Series	6				●	■		●	■				
282 Series	8				●	■		●	■				
283 Series	12				●	■		●	■				
284 Series	10				●	■		●	■				
285 Series	16				●	■		●	■				
880 Series	5				●	■		●		□	□		
<b>TOPJOB® Classic</b>													
780 Series	5				□	■		□	■				
781 Series	6				●	■		●	■				
782 Series	8				●	■		●	■				
783 Series	12				●	■		●	■				
784 Series	10				●	■		●	■				
785 Series	16				●	■		●	■				
<b>X-COM®-SYSTEM/X-COM®S-SYSTEM</b>													
X-COM® 769 Series	5									■	■		■
X-COM® 870 Series	5	□			●	■		●	■	□	□		■
X-COM® S MINI 2020 Series	3.5		■	■	●	■		●	■	□	□		■
X-COM® 2022 Series	5.2		■		●	■		●	■	□	□		■
<b>Miniature Terminal Blocks</b>													
260 Series	5 / 8											■	
261 Series	6 / 0											■	
262 Series	7 / 12											■	
264 Series	6 / 10									■	■		
862 Series	12		■										
869 Series	5		□		●	■		●	■	□	□		
<b>Printer</b>													
<b>smartPRINTER</b>			■	■	■	■				■			
Ordering at <a href="http://www.wago.com">www.wago.com</a>							■	■	■		■		
per <b>smartDESIGNER</b>													■

		Marking strips	WMB Inline markers on a roll	WMB markers, cards	Mini-WSB markers, roll and card	Self-adhesive marking strips	Direct marking on product
		7.5	11	3.5 4 ... 4.2 5 ... 5.2	3.5 4 ... 4.2 5 ... 5.2	5 (Roll) 5 (Card)	9
		Width (mm)					
<b>Patchboard Systems</b>							
727 Series	7.62			●	●		
<b>High-Current Terminal Blocks, POWER CAGE CLAMP</b>							
285 Series	16 / 20 / 25			●	●		
834 Series	17.5			●	●		
<b>PCB Terminal Blocks</b>							
745 Series	5 / 7.5 / 10			●	●	●	■
746 Series	7.5			●	●	●	■
831 Series	7.62		■	■	■	■	■
218, 233, 234, 235, 236, 243, 250, 252, 253, 254, 255, 256, 257, 735, 736, 737, 738, 739, 740, 741, 742, 745, 746, 804, 805, 806, 816 Series						■	■
<b>WAGO-I/O-SYSTEM</b>							
750 Series	12 / 24 / 48		□			■	
753 Series	12 / 24 / 48		□			■	
<b>INTERFACE Modules</b>							
788 Series	15		□	■	■		
857 Series	6			●	●		
858 Series	31		■	■	■		
859 Series	6						
<b>WINSTA®</b>							
770/771 Series	10					□	■
890/891 Series	5						
<b>MULTI CONNECTION SYSTEM</b>							
231, 232, 713, 714, 721, 722, 733, 734, 831, 834, 2231, 2721 Series		10				□	■
<b>picoMAX®</b>							
2091, 2092 Series							■
<b>Printer</b>							
<b>smartPRINTER</b>			■	■			
Ordering at <a href="http://www.wago.com">www.wago.com</a>							
per <b>smartDESIGNER</b>				■	■	■	■

# CABLE AND CONDUCTOR MARKING

## Marking Sleeves and Markers



Length: 12 mm

Item No.	Description and Color	Pack. Unit
211-812	<b>Marking sleeve</b> for 1.4 ... 5 mm conductor diameter, transparent	1 bag (500 sleeves)
211-813	<b>Marking sleeve</b> for 5 ... 11 mm conductor diameter, transparent	1 bag (500 sleeves)
211-811	<b>Marker for marking sleeve</b> 12 x 4 mm, white	1 roll (2,500 markers)

Length: 23 mm

Item No.	Description and Color	Pack. Unit
211-823	<b>Marking sleeve</b> for 1.4 ... 5 mm conductor diameter, transparent	1 bag (500 sleeves)
211-824	<b>Marking sleeve</b> for 5 ... 11 mm conductor diameter, transparent	1 bag (200 sleeves)
211-829	<b>Marking sleeve</b> Mounting via cable tie, transparent	1 bag (200 sleeves)
211-821	<b>Marker for marking sleeve</b> 23 x 4 mm, white	1 roll (2,500 markers)

## Cable Tie Markers (Mounting via Cable Tie)



Item No.	Description and Color	Pack. Unit
211-835	<b>Cable tie marker</b> 25 x 20 mm (write-on surface: 25 x 10 mm), 1 line, white	1 roll (500 markers)
211-836	<b>Cable tie marker</b> Inner wrap (write-on surface on the inner side: 100 x 15 mm), 2 lines, white	1 roll (800 markers)
211-836/ 000-002	<b>Cable tie marker</b> Inner wrap (write-on surface on the inner side: 100 x 15 mm), 2 lines, yellow	1 roll (800 markers)



## Conductor Markers for Thread-On Mounting



Item No.	Description and Color	Pack. Unit
211-861	<b>Conductor markers for thread-on mounting</b> 5 x 10.5 mm write-on surface, 3 lines, 0.75 ... 1.5 mm <sup>2</sup> , white	1 roll (1,000 markers)
211-862	<b>Conductor markers for thread-on mounting</b> 7 x 10.5 mm write-on surface, 3 lines, 2.5 ... 6 mm <sup>2</sup> , white	1 roll (1,000 markers)
211-863	<b>Conductor markers for thread-on mounting</b> 10 x 17 mm write-on surface, 2 lines, 6 ... 16 mm <sup>2</sup> , white	1 roll (1,000 markers)

## Self-Laminating Labels



Item No.	Description and Color	Pack. Unit
211-855	<b>Self-laminating labels</b> 9 x 18 mm write-on surface, 2 lines, white	1 roll (1,000 labels)
211-856	<b>Self-laminating labels</b> 15 x 12 mm write-on surface, 2 lines, white	1 roll (1,000 labels)
211-857	<b>Self-laminating labels</b> 18 x 44 mm write-on surface, 1 line, white	1 roll (500 labels)

## Shrink Tubes (2:1 Shrink Ratio)



Item No.	Unshrunk Ø and Color	Cross Section	Pack. Unit
211-500	2.4 mm, white	0.25 ... 0.75 mm <sup>2</sup>	1 roll (20 m)
211-500/000-002	2.4 mm, yellow	0.25 ... 0.75 mm <sup>2</sup>	1 roll (20 m)
211-501	3.2 mm, white	0.75 ... 1.00 mm <sup>2</sup>	1 roll (20 m)
211-501/000-002	3.2 mm, yellow	0.75 ... 1.00 mm <sup>2</sup>	1 roll (20 m)
211-502	4.8 mm, white	1.00 ... 2.50 mm <sup>2</sup>	1 roll (20 m)
211-502/000-002	4.8 mm, yellow	1.00 ... 2.50 mm <sup>2</sup>	1 roll (20 m)
211-503	6.4 mm, white	4.00 ... 6.00 mm <sup>2</sup>	1 roll (20 m)
211-503/000-002	6.4 mm, yellow	4.00 ... 6.00 mm <sup>2</sup>	1 roll (20 m)
211-504	9.5 mm, white	10.0 ... 16 mm <sup>2</sup>	1 roll (15 m)
211-504/000-002	9.5 mm, yellow	10.0 ... 16 mm <sup>2</sup>	1 roll (15 m)
211-505	12.7 mm, white	25.0 ... 35.0 mm <sup>2</sup>	1 roll (15 m)
211-505/000-002	12.7 mm, yellow	25.0 ... 35.0 mm <sup>2</sup>	1 roll (15 m)
211-506	19 mm, white	35.0 ... 50.0 mm <sup>2</sup>	1 roll (15 m)
211-506/000-002	19 mm, yellow	35.0 ... 50.0 mm <sup>2</sup>	1 roll (15 m)

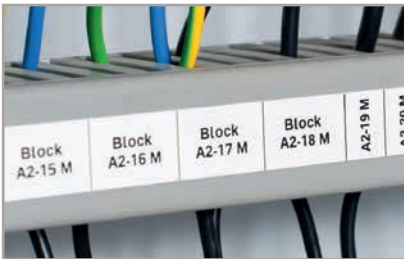
# DEVICE MARKING

## Self-Adhesive Continuous Labels



Item No.	Description and Color	Pack. Unit
210-831	9 lines, 2.3 mm wide, white	1 roll (25 m)
210-832	9 lines, 3 mm wide, white	1 roll (25 m)
210-834	5 lines, 5 mm wide, white	1 roll (25 m)
210-833	5 lines, 6 mm wide, white	1 roll (25 m)

## Self-Adhesive Marking Strips



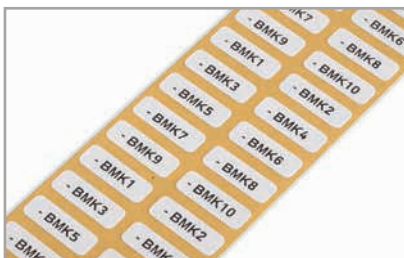
Item No.	Description and Color	Pack. Unit
210-702	15 mm wide, white	1 roll (50 m)
210-870	10 mm wide, white	1 roll (20 m)
210-871	10 mm wide, silver	1 roll (20 m)
210-872	20 mm wide, white	1 roll (20 m)
210-873	20 mm wide, silver	1 roll (20 m)
210-874	30 mm wide, white	1 roll (20 m)
210-875	30 mm wide, silver	1 roll (20 m)
210-876	46 mm wide, white	1 roll (20 m)
210-876/000-002	46 mm wide, yellow	1 roll (20 m)
210-877	46 mm wide, silver	1 roll (20 m)

## Self-Adhesive Polyester Labels



Item No.	Description and Color	Pack. Unit
210-805	6 x 15 mm, white	1 roll (3,000 labels)
210-805/000-002	6 x 15 mm, yellow	1 roll (3,000 labels)
210-806	9 x 15 mm, white	1 roll (3,000 labels)
210-806/000-002	9 x 15 mm, yellow	1 roll (3,000 labels)
210-807	8 x 20 mm, white	1 roll (3,000 labels)
210-807/000-002	8 x 20 mm, yellow	1 roll (3,000 labels)
210-808	9.5 x 25 mm, white	1 roll (1,500 labels)
210-810	5 x 35 mm, white	1 roll (1,500 labels)

## Fabric Labels



Item No.	Description and Color	Pack. Unit
210-811	7 x 20 mm, 1 line, white	1 roll (3,000 labels)
210-811/000-002	7 x 20 mm, 1 lines, yellow	1 roll (3,000 labels)

## Push-Button Markers



Item No. (Push-Button Marker)	Size	Pack. Unit	Color/Other	Required Accessories for Push-Button Markers	Pack. Unit
<b>210-850</b> (for Eaton)	26.5 x 18.0 mm	1 roll (1,000 markers)	silver, detachable adhesive	<b>210-851</b> Cover, transparent	100 covers
<b>210-856</b> (for Siemens)	27.5 x 17.5 mm	1 roll (1,000 markers)	silver, detachable adhesive	<b>210-857</b> Cover, transparent	100 covers
<b>210-858</b> (for Siemens)	22.0 x 22.0 mm	1 roll (1,000 markers)	silver, permanent adhesive	<b>210-859</b> Cover, transparent	100 covers
<b>210-860</b> (for Siemens)	27.0 x 27.0 mm	1 roll (1,000 markers)	silver, permanent adhesive	<b>210-861</b> Cover, transparent	100 covers
<b>210-862</b> (for Siemens)	27.0 x 12.5 mm	1 roll (1,000 markers)	silver, permanent adhesive	<b>210-863</b> Cover, transparent	100 covers
<b>210-852</b>	27.0 x 19.0 mm	1 roll (350 markers)	silver, permanent adhesive	<b>210-853</b> Push-Button Frame, black	100 frames
<b>210-855</b>	27.0 x 18.0 mm	1 roll (350 markers)	silver, permanent adhesive	<b>210-853</b> Push-Button Frame, black	100 frames
<b>210-854</b>	28.0 x 28.0 mm	1 roll (500 markers)	silver, permanent adhesive	-	-
<b>210-847</b>	22.0 x 22.0 mm	1 roll (300 markers)	silver, permanent adhesive	-	-
<b>210-848</b>	27.0 x 27.0 mm	1 roll (250 markers)	silver, permanent adhesive	-	-

## Type Plates



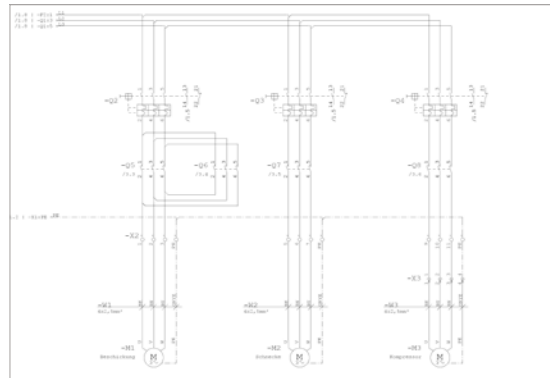
Item No.	Description and Color	Pack. Unit
<b>210-801</b>	33 x 70 mm, white	1 roll (500 plates)
<b>210-802</b>	33 x 70 mm, silver	1 roll (500 plates)
<b>210-803</b>	44 x 99 mm, white	1 roll (500 plates)
<b>210-804</b>	44 x 99 mm, silver	1 roll (500 plates)
<b>210-812</b>	25 x 50 mm, silver	1 roll (500 plates)

# smartDATA ENGINEERING

## Supports Workflow from Control Cabinet Planning to Installation

### Electrical Engineering

Directly import data from a CAE circuit diagram into the **smartDESIGNER** engineering software



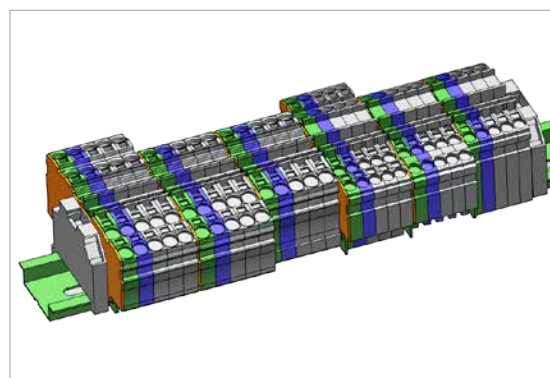
### Technical and Commercial Item Data

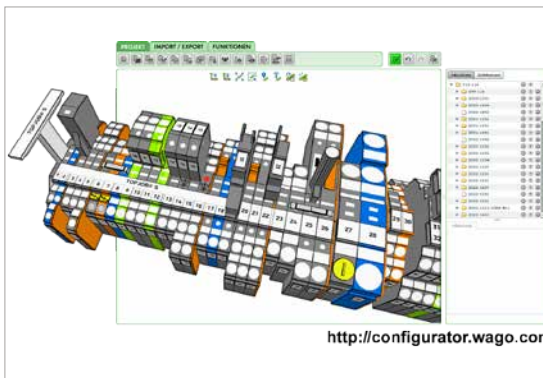
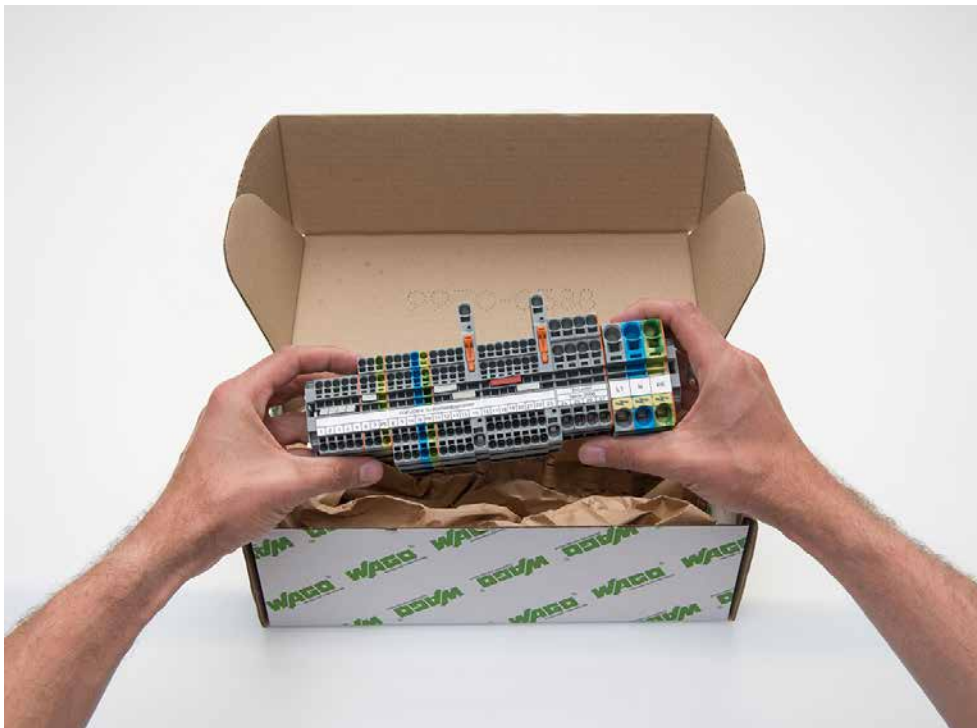
Classified by ETIM and eCl@ss – also in Advanced Format

- 27-14-01-01 Schalttafel
- 27-14-01-02 Schalttafel
- 27-14-01-03 Schalttafel
- 27-14-01-04 Schalttafel
- 27-14-01-05 Schalttafel
- 27-14-01-06 Schalttafel
- 27-14-01-07 Schalttafel
- 27-14-01-08 Schalttafel
- 27-14-01-09 Schalttafel
- 27-14-01-10 Schalttafel
- 27-14-01-11 Schalttafel
- 27-14-01-12 Schalttafel
- 27-14-01-13 Schalttafel
- 27-14-01-14 Schalttafel
- 27-14-01-15 Schalttafel
- 27-14-01-16 Schalttafel
- 27-14-01-17 Schalttafel
- 27-14-01-18 Schalttafel
- 27-14-01-19 Schalttafel
- 27-14-01-20 Schalttafel
- 27-14-01-21 Schalttafel
- 27-14-01-22 Schalttafel
- 27-14-01-23 Schalttafel
- 27-14-01-24 Schalttafel
- 27-14-01-25 Schalttafel
- 27-14-01-26 Schalttafel
- 27-14-01-27 Schalttafel
- 27-14-01-28 Schalttafel
- 27-14-01-29 Schalttafel
- 27-14-01-30 Schalttafel
- 27-14-01-31 Schalttafel
- 27-14-01-32 Schalttafel
- 27-14-01-33 Schalttafel
- 27-14-01-34 Schalttafel
- 27-14-01-35 Schalttafel
- 27-14-01-36 Schalttafel
- 27-14-01-37 Schalttafel
- 27-14-01-38 Schalttafel
- 27-14-01-39 Schalttafel
- 27-14-01-40 Schalttafel
- 27-14-01-41 Schalttafel
- 27-14-01-42 Schalttafel
- 27-14-01-43 Schalttafel
- 27-14-01-44 Schalttafel
- 27-14-01-45 Schalttafel
- 27-14-01-46 Schalttafel
- 27-14-01-47 Schalttafel
- 27-14-01-48 Schalttafel
- 27-14-01-49 Schalttafel
- 27-14-01-50 Schalttafel

### Mechanical Engineering

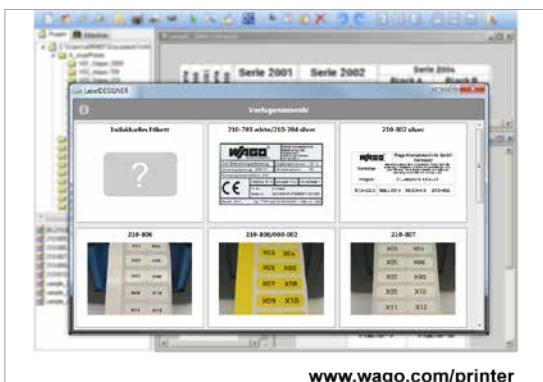
CAD export into all standard CAD formats and in different granularities





## smartDESIGNER

- Free online configuration and ordering software for all electrical interconnect and automation components
- No installation required
- Available worldwide – 24 hours a day
- Item data is always updated
- Auto-audit feature checks product compatibility via programmed database
- Design in full 3D



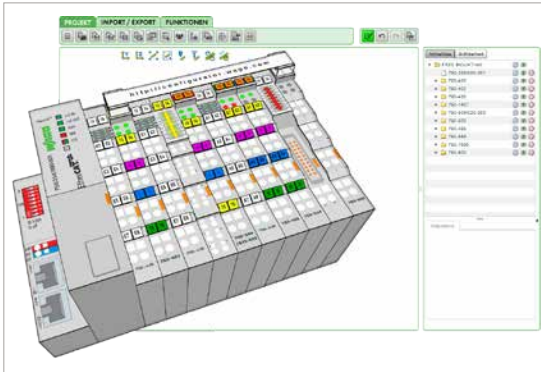
## smartSCRIPT

- XML-based software for all WAGO marking materials
- Data import from CAE systems
- Font size check
- Material selection wizard

Configuration made easy – <http://configurator.wago.com>

# smartDATA ENGINEERING

## Fast and Easy Control Cabinet Marking



### smartDESIGNER

After designing, print labeling materials directly from the project via **smartPRINTER**

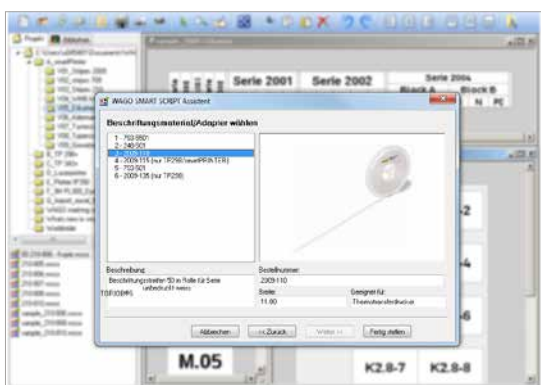
<https://configurator.wago.com>

### smartPRINTER

Thermal transfer printer quickly and easily labels the entire control cabinet:

- WAGO marking strips and markers
- Type plates
- Push-button markers
- Labels
- Cable and conductor marking

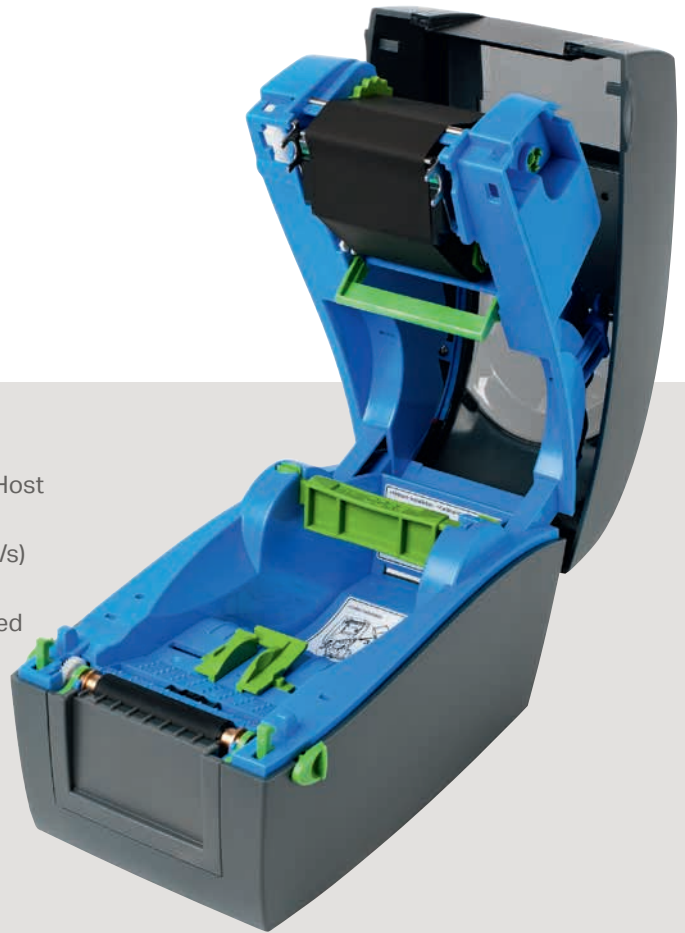
[www.wago.com/smartprinter](http://www.wago.com/smartprinter)



### smartSCRIPT

- Import from CAE systems or create customized marking
- Print directly on **smartPRINTER**

# TECHNICAL DATA AND ACCESSORIES



**smartPRINTER**  
Item No. 258-5000

Print resolution	300 dpi (12 pixels/mm)
Interfaces	USB, RS-232, ETHERNET 10/100 Mbps, USB Host
Memory	8 MB Flash, 16 MB SDRAM
Print speed	Max.127 mm/s (WAGO recommends 50.8 mm/s)
Print width/length	47 mm/762 mm (max.)
Sensor	Transmissive or reflective sensor, centrally fixed
Ink ribbon	Roll outside diameter: 40 mm
Diameter	Roll inner core diameter: 12.7 mm (0.5"), max. 110 m long, 58 mm wide
Print head	Glass layer, spring-mounted
Printer dimensions	Length: 245 mm, height: 175 mm, width: 135 mm
Weight	2 kg (without printing material)
Operating display	Color TFT-LCD with operating functions
Operating temperature	5 °C ... 40 °C (41 °F ... 104 °F)
Storage temperature	-20 °C ... 50 °C (-4 °F ... 122 °F)
Operating voltage	100 ... 240 VAC, 50 ... 60 Hz (automatic adjustment)
Certificate	UL



Carrying case for **smartPRINTER**  
Item No. 258-5015  
Dimensions (cm): 50 W x 26 H x 33 D  
(without printer, with foam padding for printer and accessories)



Printer has several interfaces: USB,  
RS-232, ETHERNET 10/100 Mbps,  
USB Host



Ink ribbon, standard  
Item No. 258-5005



Ink ribbon for self-laminating labels  
Item No. 258-5014



Suitable roller for marking strips,  
cable and conductor markers, device  
labels and WMB Inline markers  
Item No. (see page 5)

**WAGO Kontakttechnik GmbH & Co. KG**

Postfach 2880 · 32385 Minden  
Hansastraße 27 · 32423 Minden  
[info@wago.com](mailto:info@wago.com)  
[www.wago.com](http://www.wago.com)

Headquarters	+49 571/ 887 - 0
Sales	+49 571/ 887 - 222
Order Service	+49 571/ 887 - 333
Fax	+49 571/ 887 - 169

WAGO is a registered trademark of WAGO Verwaltungsgesellschaft mbH.

“Copyright – WAGO Kontakttechnik GmbH & Co. KG – All rights reserved. The content and structure of the WAGO websites, catalogs, videos, and other WAGO media are subject to copyright. Distribution or modification to the contents of these pages and videos is prohibited. Furthermore, the content may neither be copied nor made available to third parties for commercial purposes. Also subject to copyright are the images and videos that were made available to WAGO Kontakttechnik GmbH & Co. KG by third parties.”